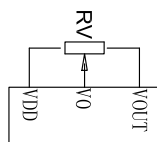
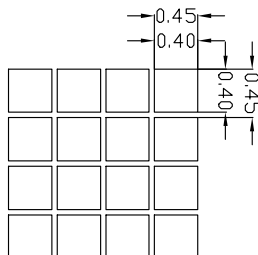
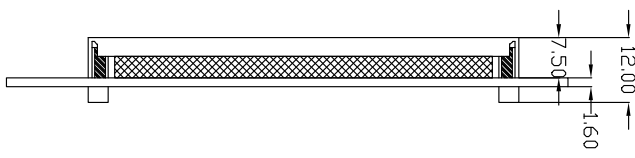
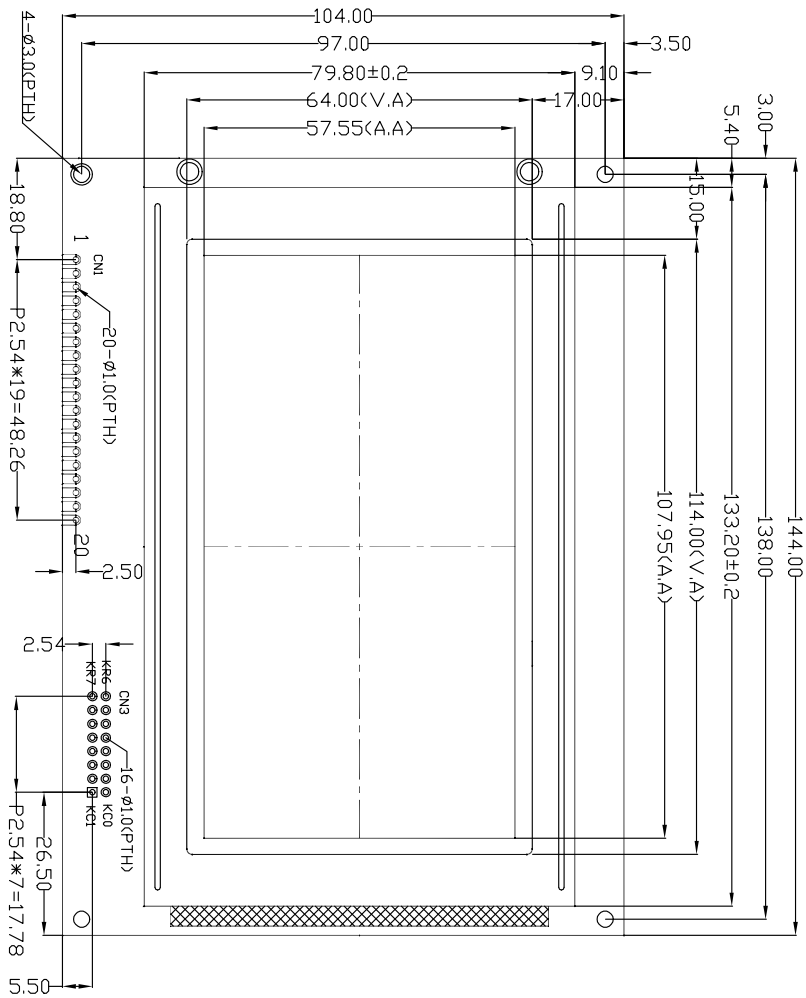


Customer approval :



的接口为矩阵键盘接口，根据用户需要使用

CN1:

1	2	3	4	5	6	7	~	14	15	16	17	18	19	20
VSS	VDD	V0	RS	/RD	/WR	DB0	~	DB7	/CS1	CS2	/RST	VOUT	BLA	BLK

- SPECIFICATION:**
- 1) Driving: Duty:1/128, Bias:1/12, V_{dd}:5.0V, V_{led}:V0:18V
 - 2) VIEWING DIRECTION: 6 O'CLOCK
 - 3) Display mode: STN/Negative/Transmissive/BLUE
 - 4) Operating temp: -20°C~+70°C
 - 5) Storage temp: -30°C~+80°C
 - 6) Control IC: RA8822P1N-S(Or Compatible)
 - 7) BACKLIGHT: White LED 5V Edge, LED Whiteled
 - 8) DIMENSIONS WITH MARK "*" ARE IMPORTANT WITH MARK "(" ARE REFERENCED
 - 9). All the raw materials are RoHS compliant

REVISION RECORD		REV
First issue		V7.0
DRAWING NO.	SYB240128AZK/V70-5C88/BLN1R8-B5N1	
APPROVED BY	CHECKED BY	DRAWING BY
		luoxian
DRAWING NO.		2012/02/27
Shenzhen TCC LCD Hi-Tech Co., Ltd		GENERAL TOL: ±0.2
UNIT:	mm	PAGE
		1/1



深圳市三元晶科技有限公司
Shenzhen TCC LCD Hi-Tech Co., Ltd

